

What's New in Illustrator CS?

By Dave Awl



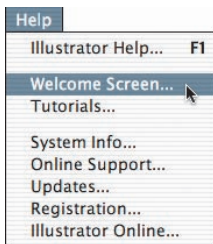
Illustrator's new floral application icon. All of the Creative Suite applications have icons inspired by nature—Illustrator's flower corresponds to Photoshop CS's new feather and InDesign CS's butterfly



Adobe's Creative Suite is available in Standard and Premium versions

Still in love with Venus?

If you can't face life without Venus's lovely visage from previous versions of Illustrator, don't worry—she isn't gone entirely from Illustrator CS, she's just hiding. You can get her to make an appearance by typing the letters V-E-N-U-S (making sure the Type tool isn't active first); then take a look at the Toolbox.



Accessing the Welcome screen

One of the first things you might notice about the newest version of Adobe Illustrator is that numbers are out, and letters are in. Instead of the predictable “Illustrator 11,” this release has been given the name “Illustrator CS.” The CS stands for Creative Suite, and in fact it is a pretty suite deal (ouch).

“Creative Suite” refers to the fact that Illustrator is now engineered to function more closely than ever with its sibling applications, Photoshop and InDesign. All three are now available as a suite, akin to the way Microsoft Office bundles together Microsoft's most popular applications. (In addition to the Standard version of the Suite, which contains Illustrator, Photoshop, and InDesign, there's also a Premium version that includes Acrobat and GoLive.)

But Illustrator CS has plenty more excitement to offer than just sibling bonding. Read on for a quick tour of Illustrator CS's new capabilities.

SPEED, GLORIOUS SPEED

Adobe knows that getting it done on time is half the battle. So Illustrator CS has been blessed with speed enhancements in almost every area of the application. This means Illustrator can move faster than ever to keep up with your working pace and help you to sustain your creative momentum.

A WELCOME BEGINNING

Illustrator CS lays out the welcome mat for its users with a brand new Welcome screen that greets you at startup (and can be accessed at any time during your session via the Help menu). The Welcome screen lets you quickly choose from three handy options for getting started: creating a new blank document, creating a new document from a template, or opening an existing document. Illustrator's virtual welcome mat also gives you handy access

to Illustrator tutorials, a guide to Illustrator CS's new features, and a PDF catalog of the "cool extras" included on the CD (such as fonts, templates, swatch and symbol libraries, and more).

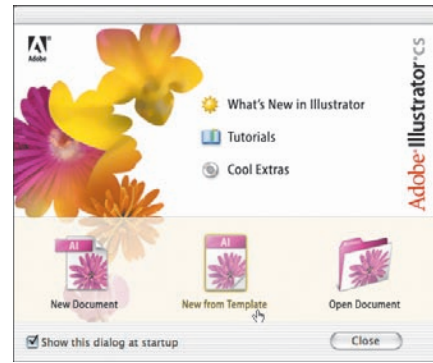
JOURNEY ACROSS THE THIRD DIMENSION

The first of two exciting graphics effects Illustrator CS offers is the ability to render objects in glorious 3D—even if you're a beginner without a sophisticated knowledge of perspective. The 3D effect lets you transform type and shapes into 3D objects, and extrude, revolve, or rotate them in space. You can even customize their lighting and surface appearance.

This might sound familiar to users of Adobe Dimensions; but Illustrator's 3D shapes are live effects, so changes you make to your 2D original are automatically reflected in your 3D version. Even better, you can map artwork onto the 3D objects you create. So you can create, for example, a 3D wine bottle (as in the illustration at right)—and then it's a snap to create a label that wraps around it with perfect 3D perspective. You can learn lots more about the 3D effect and its various capabilities in the *Live Effects & Graphic Styles* chapter.

SCRIBBLING: NOT JUST KID STUFF

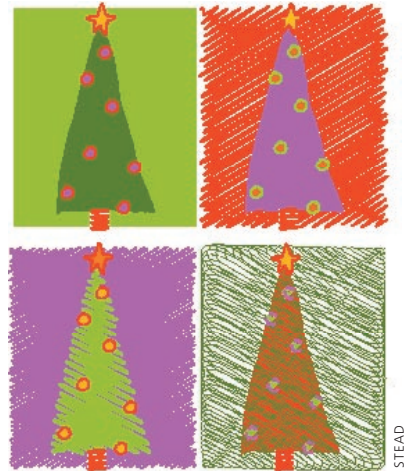
Illustrator CS's other new graphics effect lets you indulge your inner child's urge to scribble without any risk to your nice clean walls. Use Illustrator's Scribble effect to give your original artwork a friendly, hand-drawn feel; or add it to existing clip art or other objects for a dash of eye-catching personality. You can also use it to mask images, create scratchboard-like illustrations, add cross-hatching to a design, or create animated wiggly lines. Like the 3D effect described above, the Scribble effect is live, so you can edit your original object without having to reapply or modify the effect. Learn more about the Scribble effect in the *Live Effects & Graphic Styles* chapter.



Illustrator's new Welcome screen helps you get started quickly



Mordy Golding used Illustrator's 3D effect to create the wine bottle (left) from the half bottle segment (right). He then wrapped the label art around it. See the "Wine Bottle" Gallery in the *Live Effects & Graphic Styles* chapter for details



Judy Stead used Illustrator's Scribble effect to create this eye-catching holiday card. See the "Scribble Basics" lesson in the *Live Effects & Graphic Styles* chapter for details